

IN THIS ISSUE

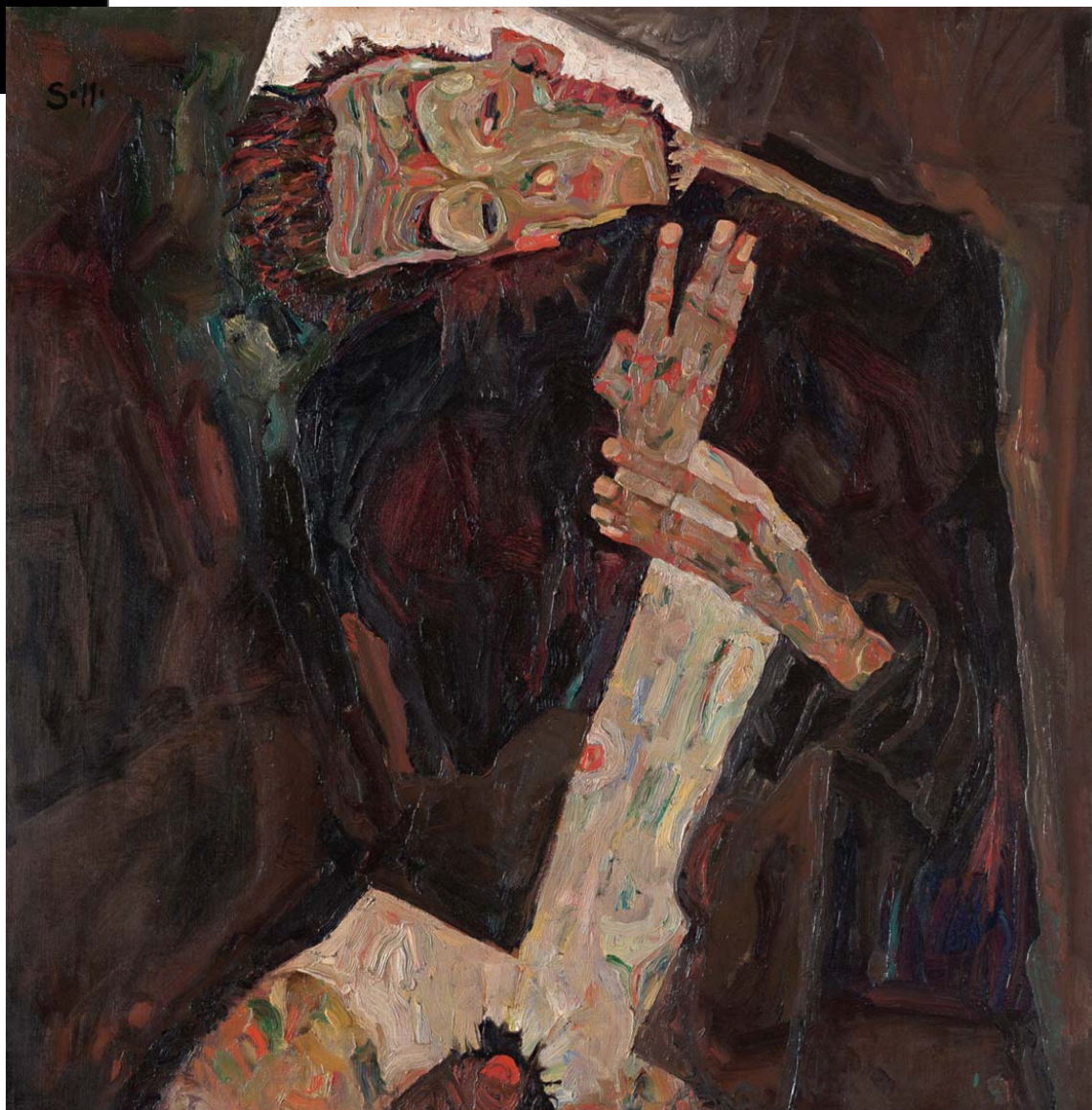
Wilson Yates
Editor's Reflections
p2

Jim Malone
*Egon Schiele: A Spiritual
Searcher amid Social
Disintegration*
p4

Mark S. Burrows
*The Energy of Poetry in a
Culture of Saturation*
p18

Mary Farrell Bednarowski
*Theological Creativity
and the Powerful
Persistence of Traditional
Religious Symbols*
p30

arts Partner School
Program
p42



The Poet, 1911. Oil on canvas, 80.5 x 80.5 cm. The Leopold Museum, Vienna. Inventory No: 450.

Kim Vrudny Elected Editor of arts;

Paul Myhre Elected President of SARTS